

LAKE & LADY SLIPPER GREEN BELT TRAILS

The Lake Trail & the Lady Slipper trail combine to give the user views of the lake, marsh land, stream, forest and the mountains. There are many options to create a roundtrip distance of 1 mile to 3.5 miles to fit the needs of the user. These trails start at the parking area of Monte Verde Lake.

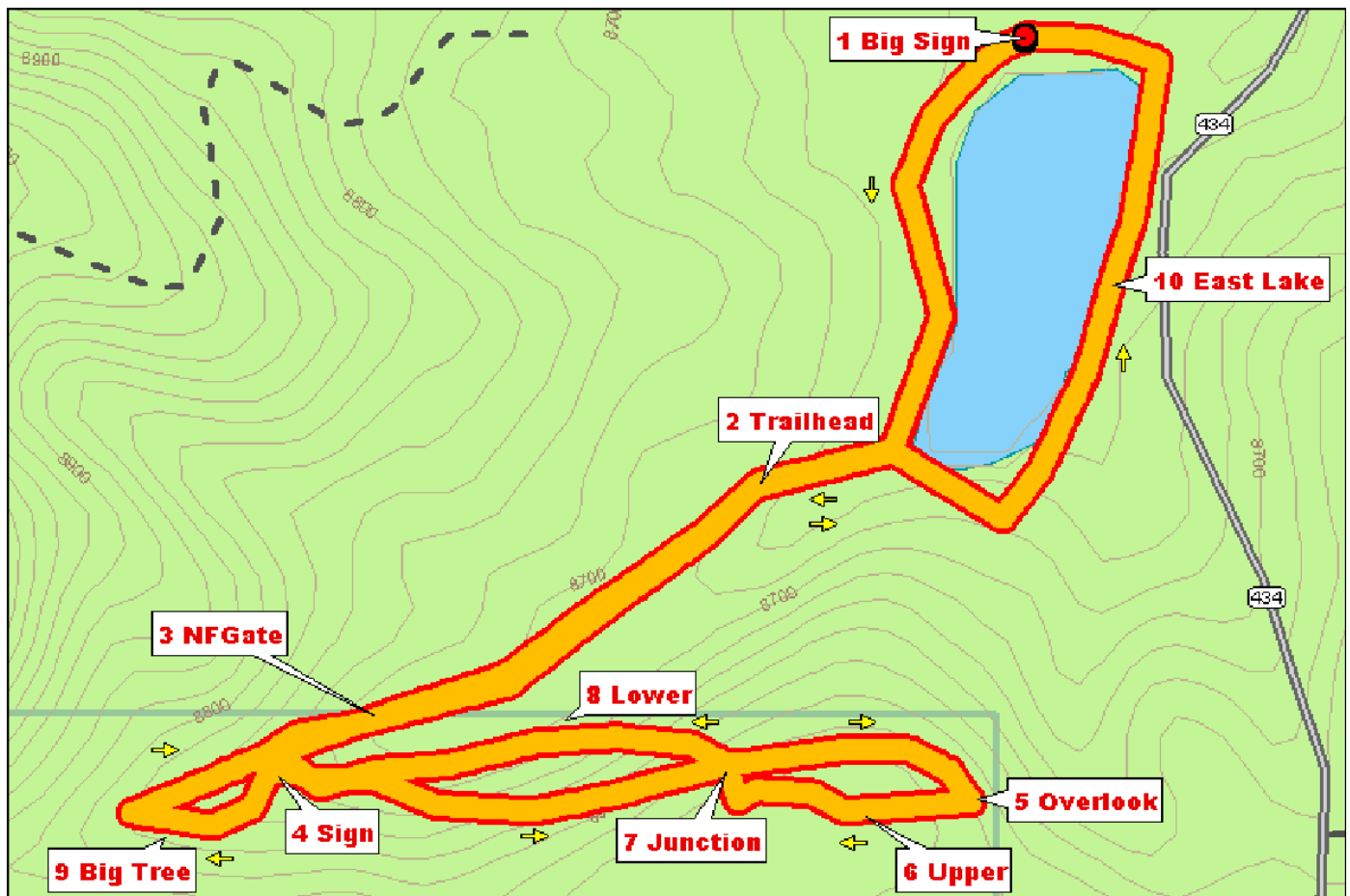
Lake Trail

This trail follows the Western shore line of the lake. Going south you have the opportunity to watch the fisherman, see lots of geese and an occasional Beaver & the remnants of a beaver lodge. Approaching the south end of Lake you must skirt the marsh area by exiting onto Lakeview Park Dr. You have the option to walk a short distance East and reenter the Lake Trail after the Marsh area and return to parking area. Or you can go south on Alpine Lakeway to the trailhead of Lady Slipper

Lady Slipper Trail

Leaving Alpine Lake Way you will cross a small bridge at the hiker sign & be in a meadow with a small stream. The trail continues on an old logging road that is kept mowed. As you approach the National Forest you will have to cross a marshy area by crossing another several bridges. The trail then enters the woods that leads to the National Forest. Look for wild flowers & grasses, especially the trails name sake "Lady Slipper" You enter the National Forest by passing through a fence using a "People Gate". Walking to the right for a bit you will turn left over another small bridge. A sign points either to the Overlook or the Big Tree. The overlook is reached by following a logging road marked with blue diamonds on the trees. The overlook is a beautiful pasture with cattle & views of the mountains. Follow the signs and diamonds through a small stretch of woods returning to the logging road. Crossing the main trail will take you to the lower loop which eventually rejoins the main trail. The big tree is reached using a small loop through the woods which returns to the logging road. Your return is over the same trail until you hit the lake and hike the Eastern shore back to the parking area.

The map & other trails are on: <http://www.angelfirechamber.org/hiking.html>



Round trip distances: Trail Sign 1.0M, National Forest 1.8M, Big Tree 2.4, Overlook & Big Tree 3.5